

SAVANNAH LOOP

all trails = x.x miles



African Elephant



Giraffe



Lorikeet Landing



Farm

RIDE



Wild Animal Carousel
2 tokens/ride

EAT

3

Shamba Market
outdoor seating
sandwiches & salads

FEED



Lorikeet Feeding
2 tokens/cup



Quiet Areas



Some places at the zoo might be loud. Here you can find an area that can be less crowded and quieter.



Grassmere Historic Home - Take a step back in time inside our historic home. Free tours are offered Memorial Day through Labor Day and periodically in the spring and fall. Check the front porch for tour times.

ZOO CENTRAL

all trails = x.x miles



Macaw



Gibbon Islands



Meerkat



Unseen New World

EAT

1

Zoofari Cafe
indoor/outdoor seating
sandwiches, wraps,
salads, hot plates, pizza,
burgers, etc.

EAT

2

Snakebites/BBQ Depot
outdoor seating
burgers, hot dogs,
bbq sandwiches,
corn-on-the-cob, ice cream

JUNGLE LOOP

all trails = x.x miles



Bamboo Trail



Flamingo Lagoon



Crittter Encounters



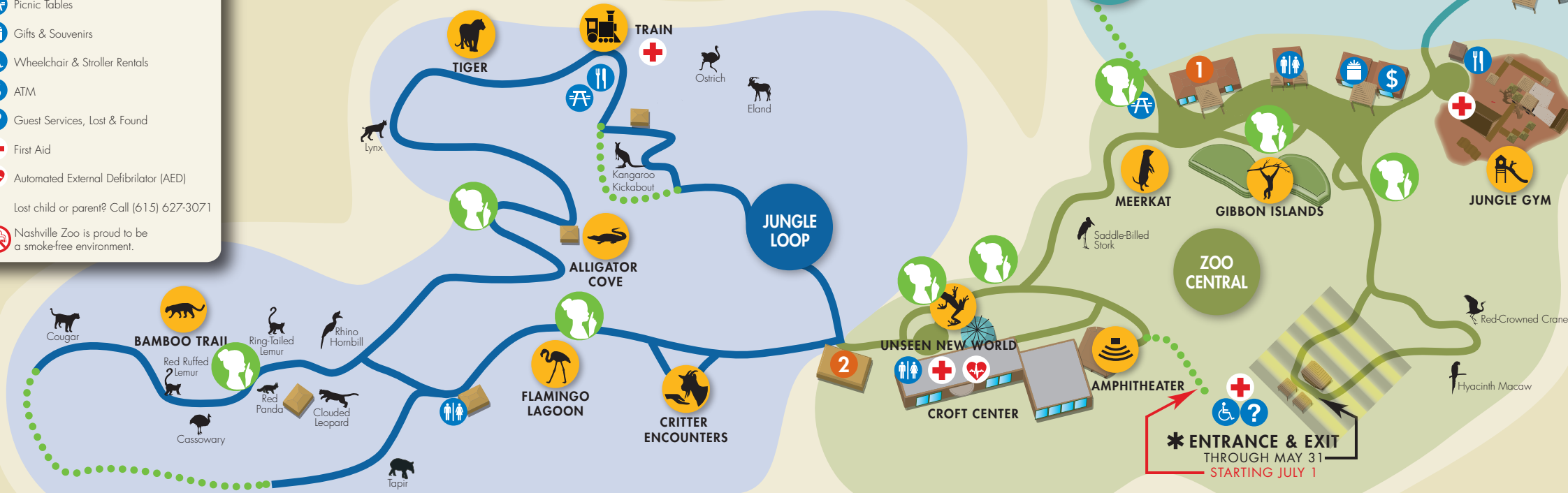
Kangaroo Kickabout

RIDE



Wilderness Express
2 tokens/ride

- Meal Options
- Restrooms
- Snacks and Drinks
- Picnic Tables
- Gifts & Souvenirs
- Wheelchair & Stroller Rentals
- ATM
- Guest Services, Lost & Found
- First Aid
- Automated External Defibrillator (AED)
- Lost child or parent? Call (615) 627-3071
- Nashville Zoo is proud to be a smoke-free environment.



Entrance Construction (begins July 1, 2014)

Our plans for a new entry include buildings for ticketing, membership, gift shop, restrooms and more. Starting June 1, all guests will enter the Zoo through a temporary entrance located to the left of the main entrance.



Educational Animal Shows - Due to the entrance construction, all animal shows will be planned on a day-by-day basis. Please check with Guest Services at our Entrance for show times and locations.

Animal Shows presented by:

